

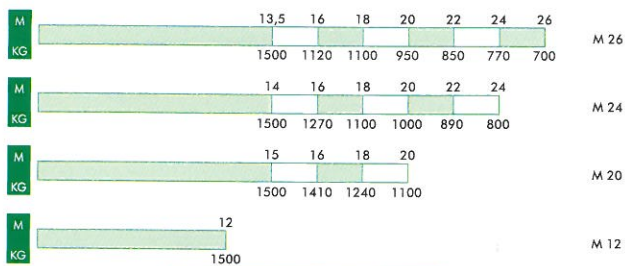


Super
A26.29.32.35

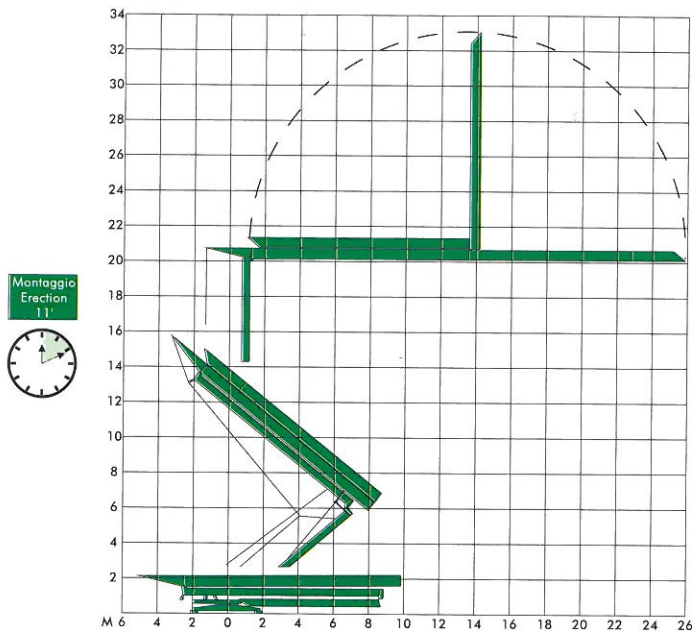
ALFA

A26 Super

DIAGRAMMI DI CARICO/LOAD DIAGRAMS

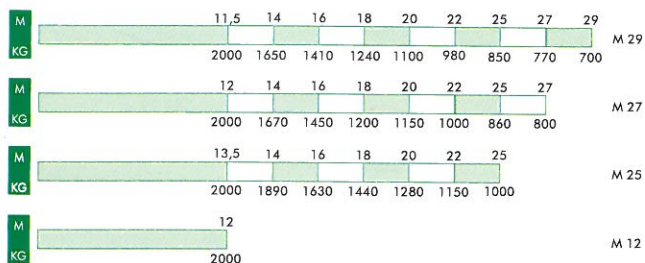


MONTAGGIO/ERECTION

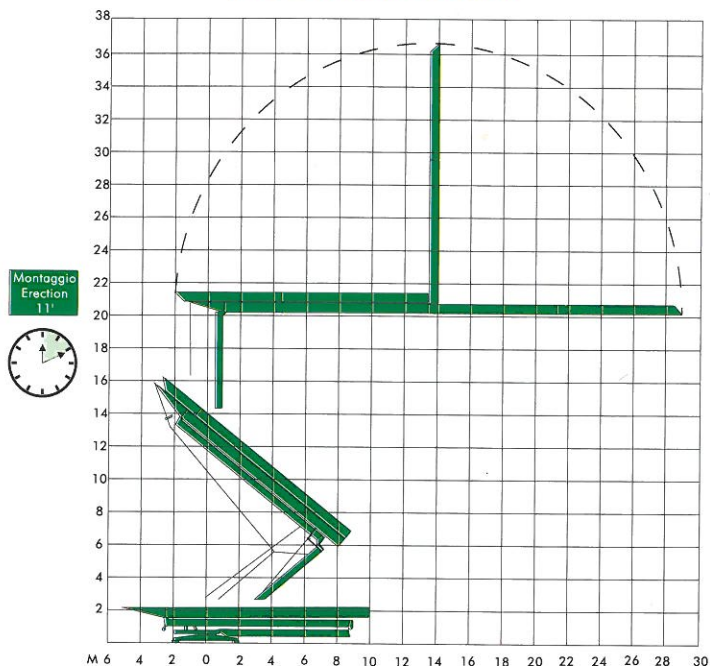


A29 Super

DIAGRAMMI DI CARICO/LOAD DIAGRAMS

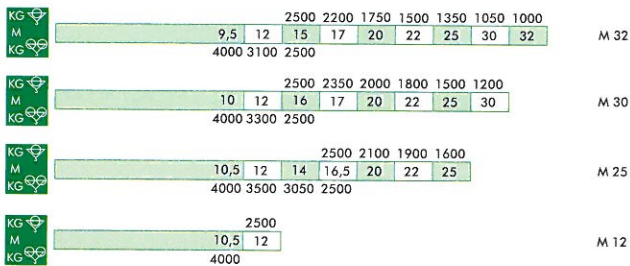


MONTAGGIO/ERECTION

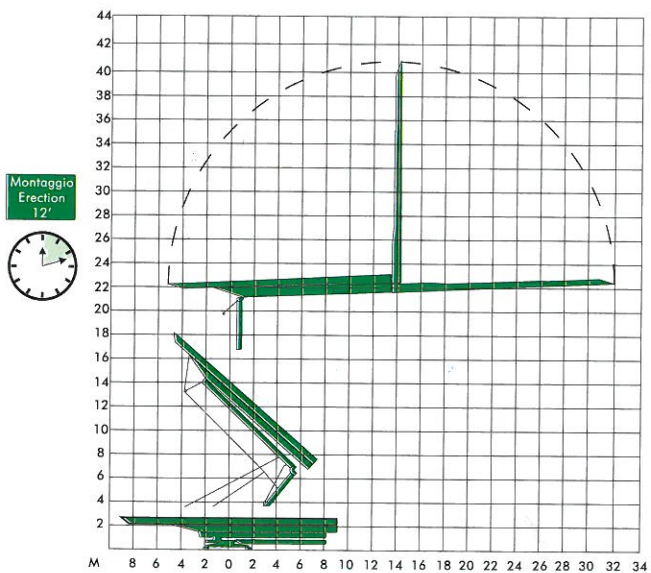


A32 Super

DIAGRAMMI DI CARICO/LOAD DIAGRAMS

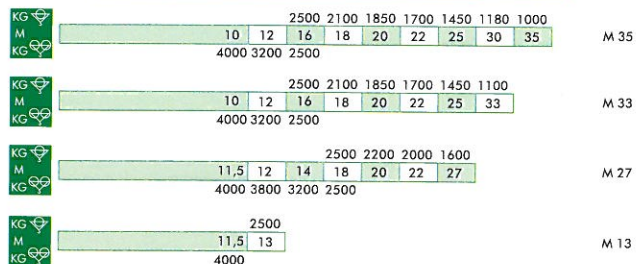


MONTAGGIO/ERECTION

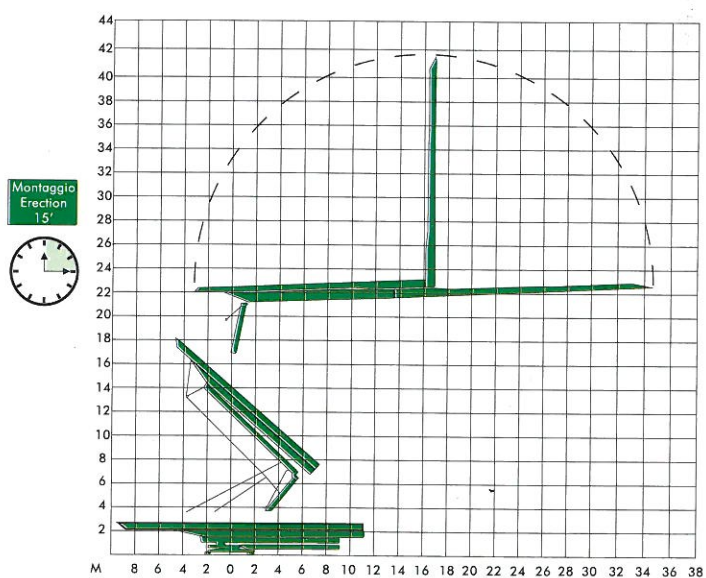


A35 Super

DIAGRAMMI DI CARICO/LOAD DIAGRAMS

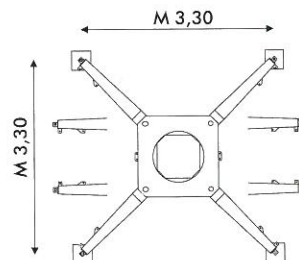
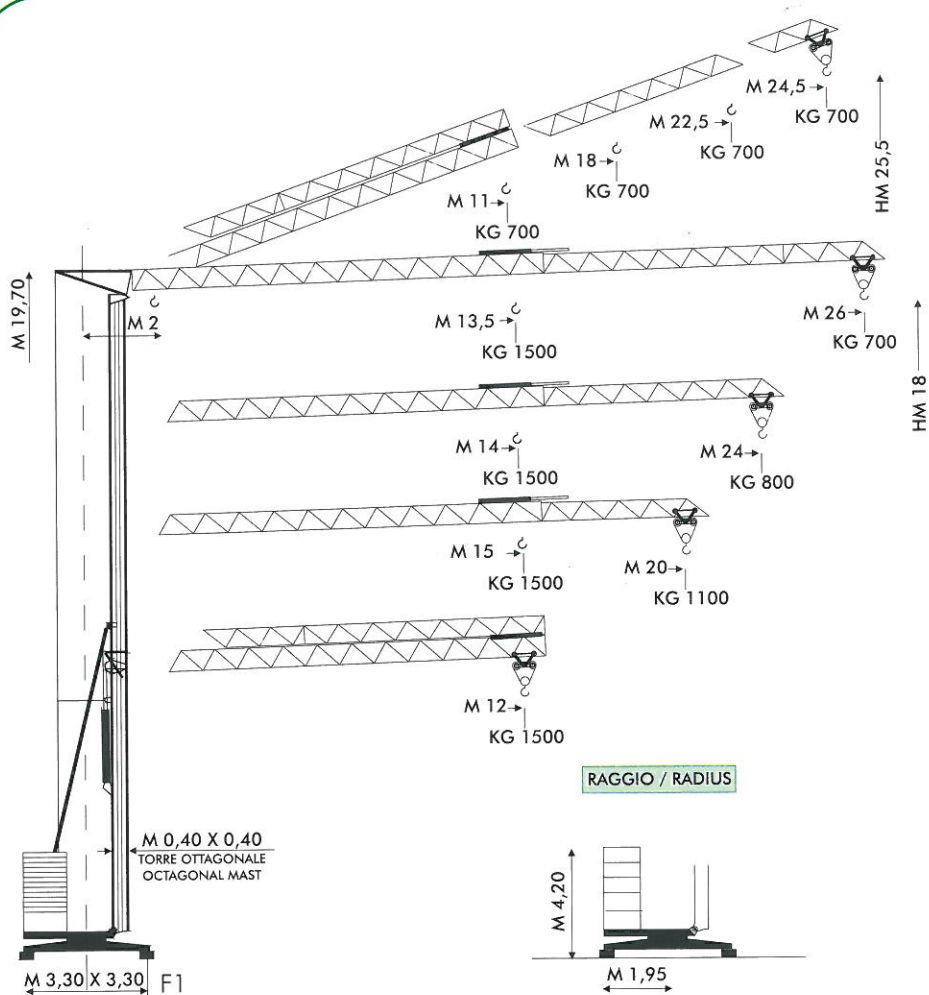


MONTAGGIO/ERECTION



ALFAMATIC

MODELLO/TYPE A 26 *Super*
26 - 24 - 20

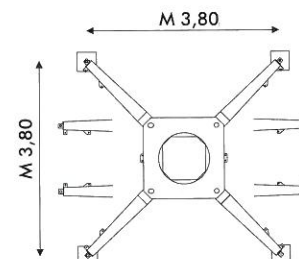
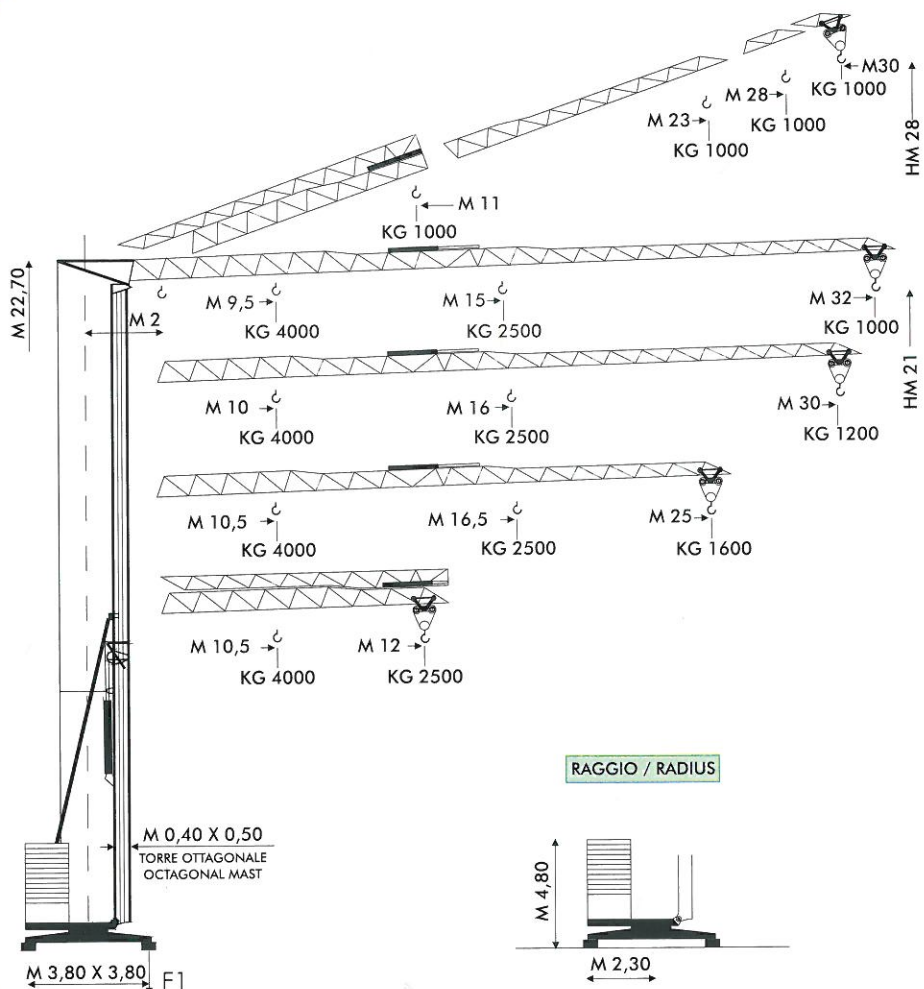


F1	● KG 12000	■ 11000
	~KG 8000/12000	

- IN ESERCIZIO / IN SERVICE
- FUORI ESERCIZIO / OUT OF SERVICE
- ⚙ PESO SENZA E CON ZAVORRA DI MONTAGGIO / WEIGHT WITHOUT & WITH ASSEMBLY BALLAST

ALFAMATIC

MODELLO/TYPE A 32 *Super*
32 - 30 - 25

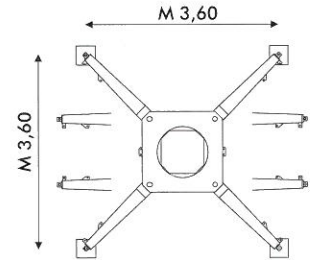
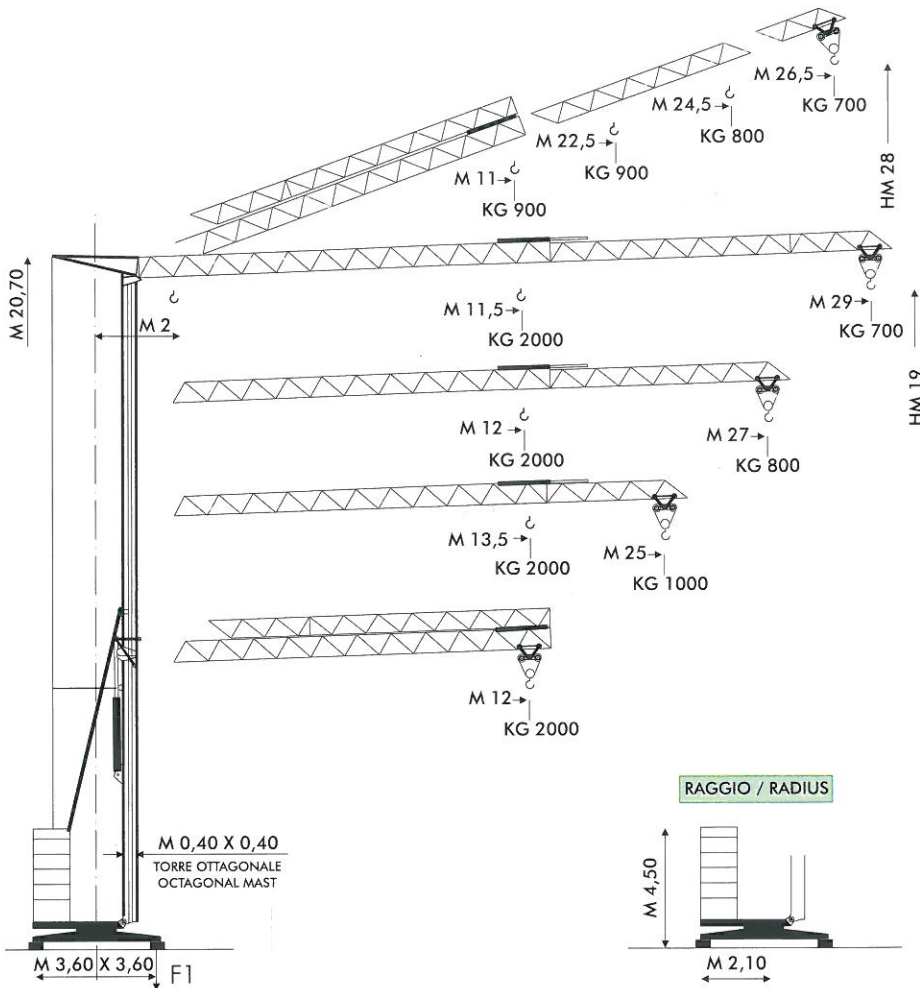


F1	● KG 21000	■ 15000
	~KG 12000/19000	

- IN ESERCIZIO / IN SERVICE
- FUORI ESERCIZIO / OUT OF SERVICE
- ⚙ PESO SENZA E CON ZAVORRA DI MONTAGGIO / WEIGHT WITHOUT & WITH ASSEMBLY BALLAST

ALFAMATIC

MODELLO/TYPE A 29 *Super*
29 - 27 - 25

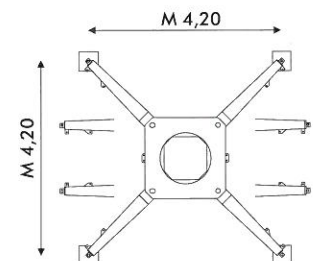
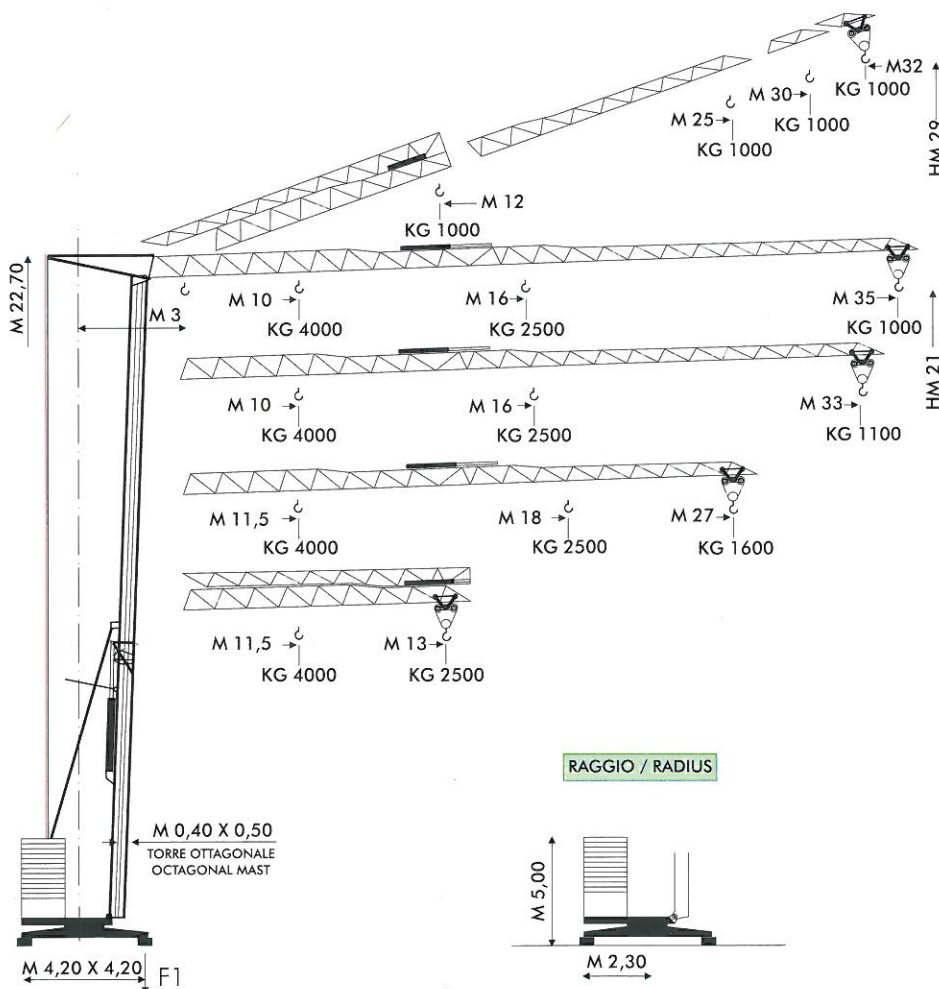


F1	● KG 14000	■ 11000
	-KG 9500/14500	

- IN ESERCIZIO / IN SERVICE
- FUORI ESERCIZIO / OUT OF SERVICE
- ⚙ PESO SENZA E CON ZAVORRA DI MONTAGGIO
WEIGHT WITHOUT & WITH ASSEMBLY BALLAST

ALFAMATIC

MODELLO/TYPE A 35 *Super*
35 - 33 - 27



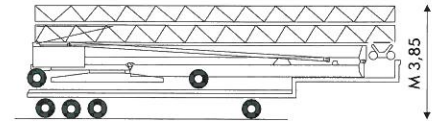
F1	● KG 24000	■ 16000
	-KG 13500/20500	

- IN ESERCIZIO / IN SERVICE
- FUORI ESERCIZIO / OUT OF SERVICE
- ⚙ PESO SENZA E CON ZAVORRA DI MONTAGGIO
WEIGHT WITHOUT & WITH ASSEMBLY BALLAST

MECCANISMI/MECHANISMS A 26 *Super* TRIFASE/THREE-PHASE

TRASPORTO / TRANSPORT

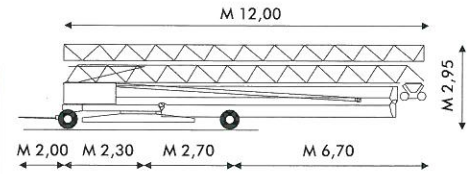
	HP	M/1'		HP	V	M/1'	KG	
	2/3 (MRC 86)	16/32		7,5/7,5/2 (109-3VS)	400	I	4,5	1500
						II	18	1500
						III	36	750
	2,5 (VF)	0 ▶ 0,9 (G/1'-REV/1')		8 ♦(MULTILIFT)		0 ▶ 45 (3/10/18 36/45)	1500/1500/1500 750/600	
MONTAGGIO ERECTION				3	---	---	---	



Su camion / On truck

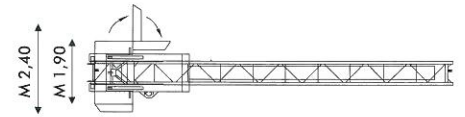
A 26 *Super* MONO-TRIFASE/ONE & THREE-PHASE ♦

	HP	M/1'		HP	V	M/1'	KG	
	3 (MRC 86)	30		5 (109-3VS)	220	I	4	1200
						II	8	1200
						III	14	600
	2,5 (VF)	0 ▶ 0,9 (G/1'-REV/1')			400	I	4	1200
						II	15	1200
						III	30	700
MONTAGGIO ERECTION				3	---	---	---	



Al treno / By haulage

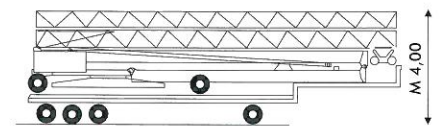
ALIMENTAZIONE/POWER SUPPLY V 400/220 ♦ /50HZ	MONTAGGIO IDRAULICO/HYDRAULIC ERECTION	BAR 110 ▶ 280
ASSALI TRAINO/TRANSPORT AXLES	RADIOCOMANDO/RADIOCONTROL	
ASSORBIMENTO/MAINS SUPPLY KW 10,8/5 ♦ /3 ♦	ZAVORRA DI MONTAGGIO/ASSEMBLY BALLAST	~KG 4300
BRACCIO IMPENNATO/LUFFING JIB	ZAVORRA MOBILE/MOBILE BALLAST	~KG 10000
FALCONE ZAVORRA/BALLAST DERRICK	♦ ZINCATURA TORRE E FRECCIA/TOWER AND JIB GALVANIZATION	



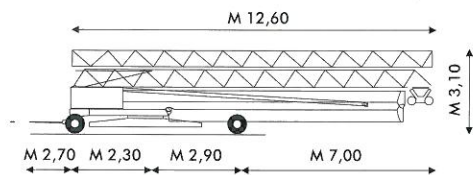
MECCANISMI/MECHANISMS A 32 *Super*

TRASPORTO / TRANSPORT

	HP	M/1'		HP	M/1'	KG		
	4/5 (MRC 110)	21/42		12/12/3 (116-3VS)	I	5	2500	
					II	20	2500	
					III	40	1000	
	3 (SECAS III)	0 ▶ 0,9 (G/1'-REV/1')				I	2,5	4000
						II	10	4000
						III	20	2000
						0 ▶ 50 (3/10/20 40/50)	2500/2500/2500 1000/800	
MONTAGGIO ERECTION	4	---		12 ♦(MULTILIFT)		0 ▶ 25 (1,5/5/10 20/25)	4000/4000/4000 2000/1600	

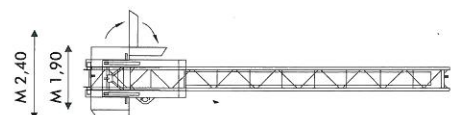


Su camion / On truck


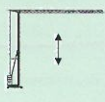



Al treno / By haulage

ALIMENTAZIONE/POWER SUPPLY V 400/50 HZ	MONTAGGIO IDRAULICO/HYDRAULIC ERECTION	BAR 110 ▶ 280
ASSALI TRAINO/TRANSPORT AXLES	RADIOCOMANDO/RADIOCONTROL	
ASSORBIMENTO/MAINS SUPPLY KW 18/12 ♦	ZAVORRA DI MONTAGGIO/ASSEMBLY BALLAST	~KG 7000
BRACCIO IMPENNATO/LUFFING JIB	ZAVORRA MOBILE/MOBILE BALLAST	~KG 21250
FALCONE ZAVORRA/BALLAST DERRICK	♦ ZINCATURA TORRE E FRECCIA/TOWER AND JIB GALVANIZATION	

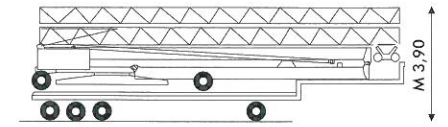


MECCANISMI/MECHANISMS A 29 *Paper*

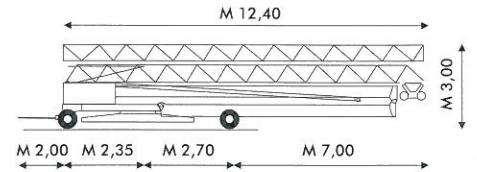
	HP	M/1'		HP	M/1'	KG	
	3/4 (MRC110)	16/32		10/10/2,5 (115-3VS)	I	5	2000
	3 (VF)	0 ▶ 0,9 (G/1'-REV/1')			II	20	2000
MONTAGGIO ERECTION	3	---			III	40	1000
				10 ♦(MULTILIFT)	0 ▶ 50 (3/10/20 40/50)	2000/2000/2000 1000/800	

ALIMENTAZIONE/POWER SUPPLY	V	400/50 HZ	MONTAGGIO IDRAULICO/HYDRAULIC ERECTION	BAR 110 ▶ 280
ASSALI TRAINO/TRANSPORT AXLES			RADIOCOMANDO/RADIOCONTROL	
ASSORBIMENTO/MAINS SUPPLY	KW	15/10 ♦	ZAVORRA DI MONTAGGIO/ASSEMBLY BALLAST	~KG 5000
BRACCIO IMPENNATO/LUFFING JIB			ZAVORRA MOBILE/MOBILE BALLAST	~KG 11500
FALCONE ZAVORRA/BALLAST DERRICK	♦		ZINCATURA TORRE E FRECCIA/TOWER AND JIB GALVANIZATION	

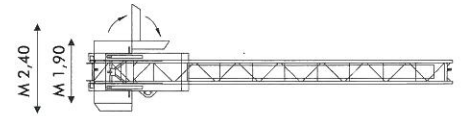
TRASPORTO / TRANSPORT



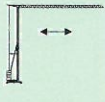
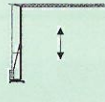

Su camion / On truck



Al treno / By haulage

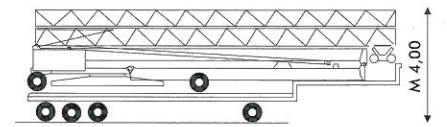


MECCANISMI/MECHANISMS A 35 *Paper*

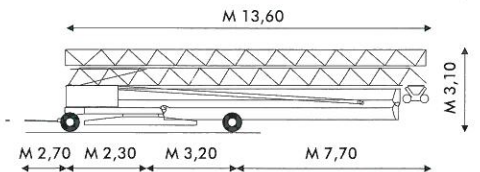
	HP	M/1'		HP	M/1'	KG	
	4/5 (MRC110)	21/42		12/12/3 (116-3VS)	I	5	2500
	3,5 (SECAS III)	0 ▶ 0,9 (G/1'-REV/1')			II	20	2500
MONTAGGIO ERECTION	4	---			III	40	1000
				12 ♦(MULTILIFT)	0 ▶ 50 (3/10/20 40/50)	2500/2500/2500 1000/800	
					0 ▶ 25 (1,5/5/10 20/25)	4000/4000/4000 2000/1600	

ALIMENTAZIONE/POWER SUPPLY	V	400/50 HZ	MONTAGGIO IDRAULICO/HYDRAULIC ERECTION	BAR 110 ▶ 280
ASSALI TRAINO/TRANSPORT AXLES			RADIOCOMANDO/RADIOCONTROL	
ASSORBIMENTO/MAINS SUPPLY	KW	18/12 ♦	ZAVORRA DI MONTAGGIO/ASSEMBLY BALLAST	~KG 7000
BRACCIO IMPENNATO/LUFFING JIB			ZAVORRA MOBILE/MOBILE BALLAST	~KG 22500
FALCONE ZAVORRA/BALLAST DERRICK	♦		ZINCATURA TORRE E FRECCIA/TOWER AND JIB GALVANIZATION	

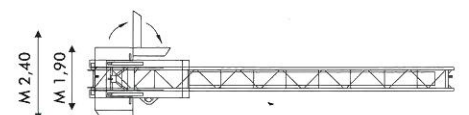
TRASPORTO / TRANSPORT

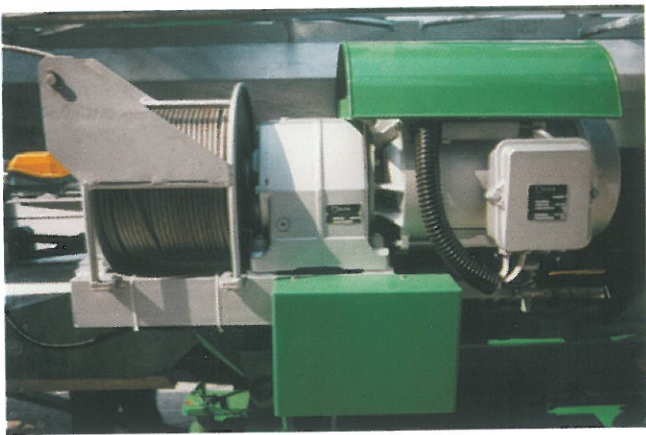


Su camion / On truck



Al treno / By haulage





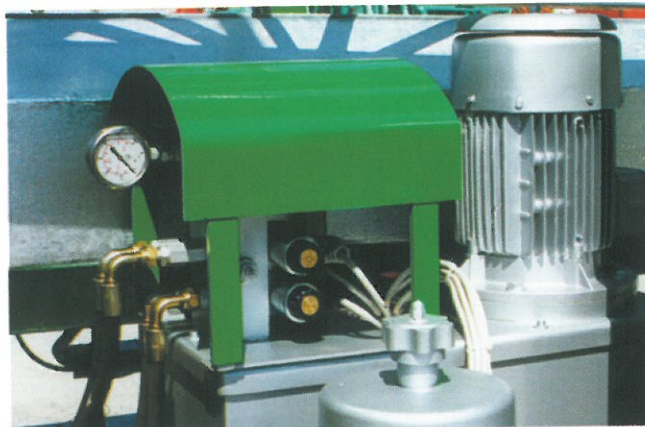
LIVELLO ACUSTICO DEI MECCANISMI A NORME CEE
SOUND LEVEL OF MECHANISMS AS PER EEC RULES



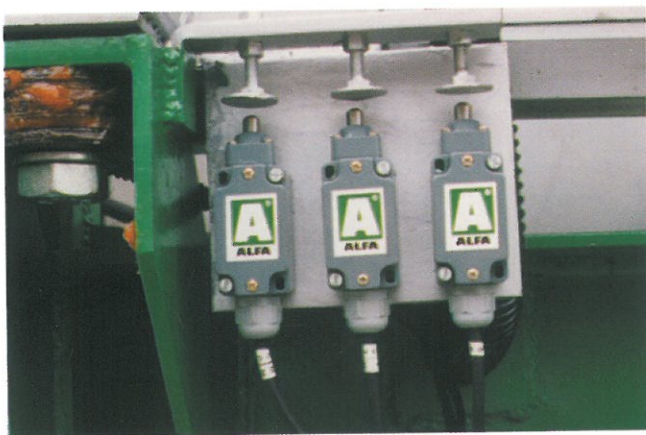
ARGANO DEL CARELLINO POSIZIONATO IN BASSO
TROLLEY WINCH IN LOW POSITION



ROTAZIONE ELETTRONICA IN PRESA DIRETTA
DIRECT DRIVE ELECTRONIC SLEWING



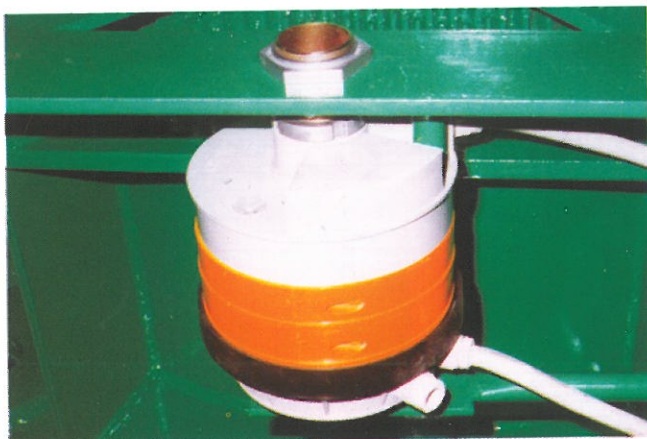
IDRAULICA CON ELETTROVALVOLE E COMANDO A DISTANZA
HYDRAULIC DEVICE WITH ELECTRO-VALVES AND REMOTE-CONTROL



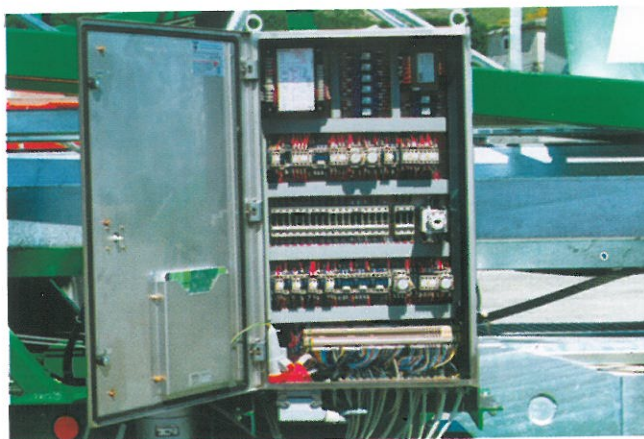
LIMITATORI DI CARICO E MOMENTO IN BASSO (DPR 547 E CIRC. 77)
LOAD AND MOMENT LIMITING DEVICES IN LOW POSITION (AS PER RULES)



BOZZELLO PER KG. 2500 CON TIRO SEMPLICE
HOOK BLOCK FOR KG. 2500 WITH 2/FALLS



COLLETTORE ELETTRICO SENZA LIMITATORE DI GIRI
ELECTRICAL SLIP RING WITHOUT REVOLUTIONS LIMIT



QUADRO ELETTRICO INOX SECONDO NORME CEI 445
STAINLESS ELECTRICAL BOARD AS PER CEI 445 RULES



CARRELLINO COMPLETO DI RUOTE LATERALI DI GUIDA
TROLLEY COMPLETE OF LATERAL GUIDE WHEELS



INNESTO ASSALI CON ALTEZZA VARIABILE
AXLES COUPLING WITH VARIABLE HEIGHT



ZAVORRA MOBILE IN BLOCCHI DA KG. 1000/1250
ADDITIONAL BALLAST - BLOCK OF KG. 1000/1250



ZAVORRA MOBILE IN LASTRE DA KG. 1250
ADDITIONAL BALLAST - SLAB BLOCK OF KG. 1250



ZAVORRA A BORDO CON INGOMBRO VARIABILE: M 1,90 ▶ 2,40
STANDARD BALLAST WITH VARIABLE WIDTH: M.1,90 ▶ 2,40



TRASPORTO SU CAMION IN SAGOMA
TRANSPORT ON TRUCK WITHIN GAUGE

ALFAMATIC

A26-29-32-35 Super



AGENTE/DEALER

ALFA SRL • 61015 NOVAFELTRIA (PU) • ITALY • PH.+39 0541 920096 • FAX 0541 921847
www.alfagru.it - info@alfagru.it